



RETAIL KIOSKS BY OLLYWOOD™

OLLYWOOD™



RETAIL KIOSKS

DESIGN & BUILD



CONTENTS

1

ABOUT US

2

OUR WAREHOUSE

3

THE PROCESS
OF A TEMPORARY KIOSK

4

PROJECTS
EXAMPLES OF
TEMPORARY KIOSKS

15

THE PROCESS
OF A PERMANENT KIOSK

16

PROJECTS
EXAMPLES OF
PERMANENT KIOSKS



ABOUT US

We are a multi-award-winning creative design and build company based in Cardiff, founded in 2019.

KIOSKS

A retail kiosk is a small, self-contained retail unit that is typically located in a public space such as a shopping centre, airport, or train station. It is designed to provide a quick and convenient way for customers to purchase products or services without the need for a traditional storefront.

Ollywood is the perfect choice for designing and building your retail kiosk. We have a team of creative professionals who are skilled in creating innovative designs that capture the spirit of your brand. Our expert craftsmen use only the best materials to construct high-quality retail kiosks that are sure to last through years of heavy usage.



OUR STUDIO / WAREHOUSE

Having our designers and builders in-house allows us to make our process seamless, from the creative design to the practical build.



TEMPORARY KIOSK

THE PROCESS

We will manage every aspect of the entire project so that you can focus on the opening of your brand new kiosk!

DON'T HAVE BRANDING?

No problem. We offer branding services!

PHASE 1

1

INITIAL MEETING

Let's chat and craft a brief tailored to your wants and needs. We can arrange a meeting at our office or set up a video call. Whichever option suits you best!

2

BRAND HANDOVER

Share your resources with us, and we will create a moodboard filled with inspiration that aligns with your brand's aesthetic.

3

DESIGN

Working alongside you, we can create a concept that works within your budget and your brand's style guide.

4

INITIAL CONCEPT

Once we have crafted an initial design concept, we will share a proposal containing an RD1 of your kiosk for your input.

5

REVISION

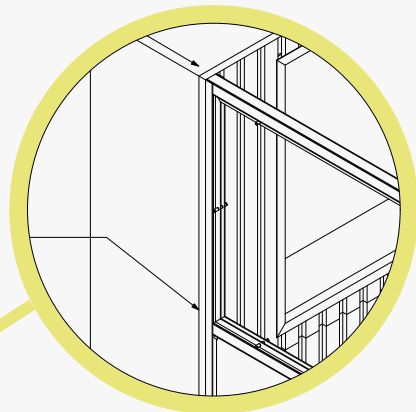
Following your feedback, we will make necessary adjustments to the design to align it more closely with your vision. Once the changes are approved, we will start the next phase of the project.

PHASE 2

6

TECHNICAL DRAWINGS

Our design team will then put together detailed technical drawings (RD2) of the kiosk. Our construction team will later use as a guide during the building process.



7

LANDLORD APPROVAL

We then submit the design to gain approval with the landlord or agents of the space. Rest assured, we will handle this process on your behalf!

8

PRODUCTION

Our team will source and order materials, construct and implement specialized components, and transform the project from concept to reality.

9

BUILD & INSTALL

Before install, we carry out quality control checks and manage the logistics. On the day of installation, our install team carefully pack, wrap, and transport the components from our warehouse and assemble the kiosk on-site.

TEMPORARY KIOSK

BEARD SURGEON

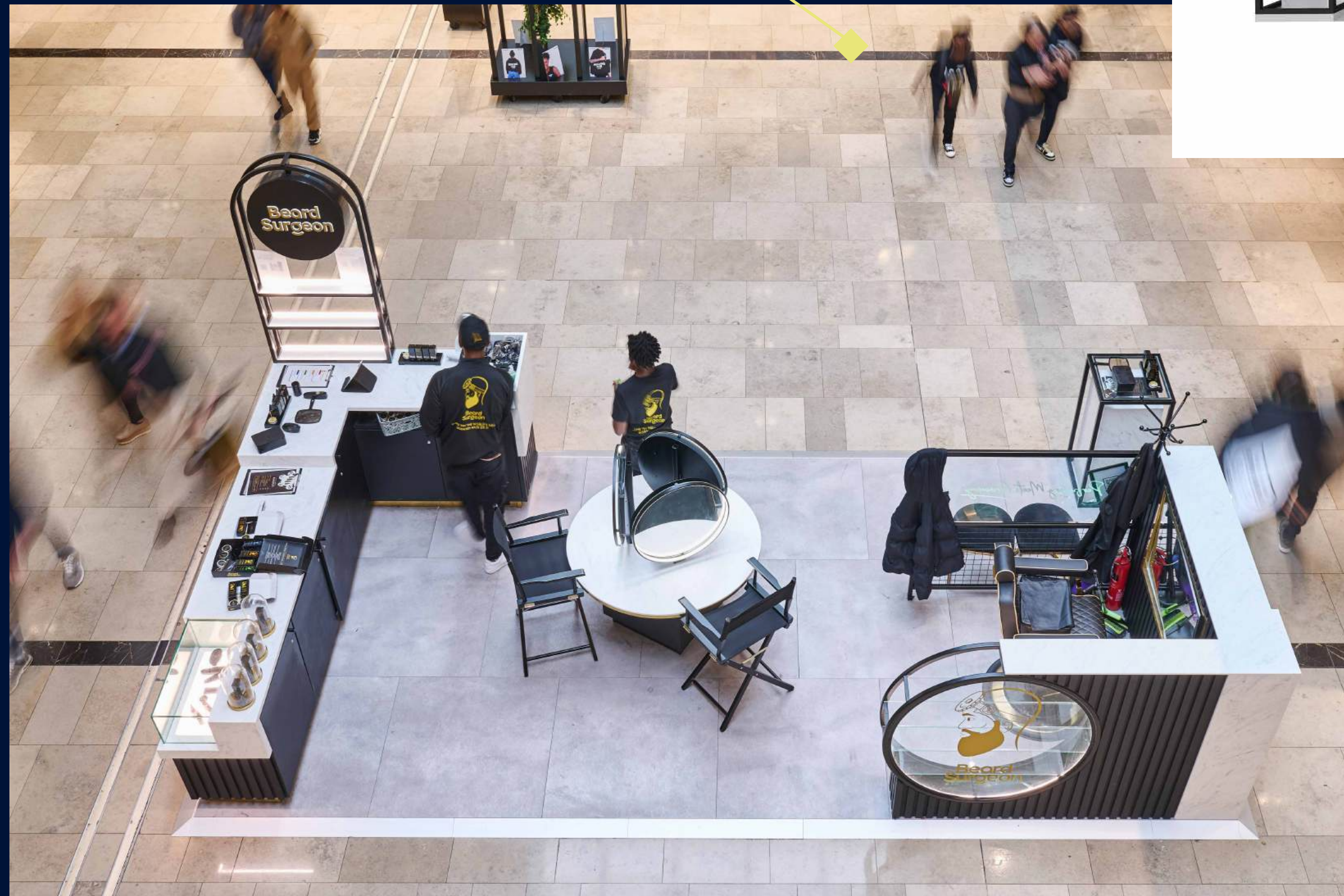
The Beard Surgeon kiosk is a testament to our dedication to high-end design and flawless execution. Key features include:

Marble Solid Surface: The luxurious marble solid surface not only enhances the aesthetic appeal but also provides a durable and easy-to-maintain workspace. This choice of material underscores our commitment to blending beauty with practicality.

Bespoke Metalwork: Custom metal elements add a touch of sophistication and uniqueness to the kiosk, reflecting the premium nature of the Beard Surgeon brand.

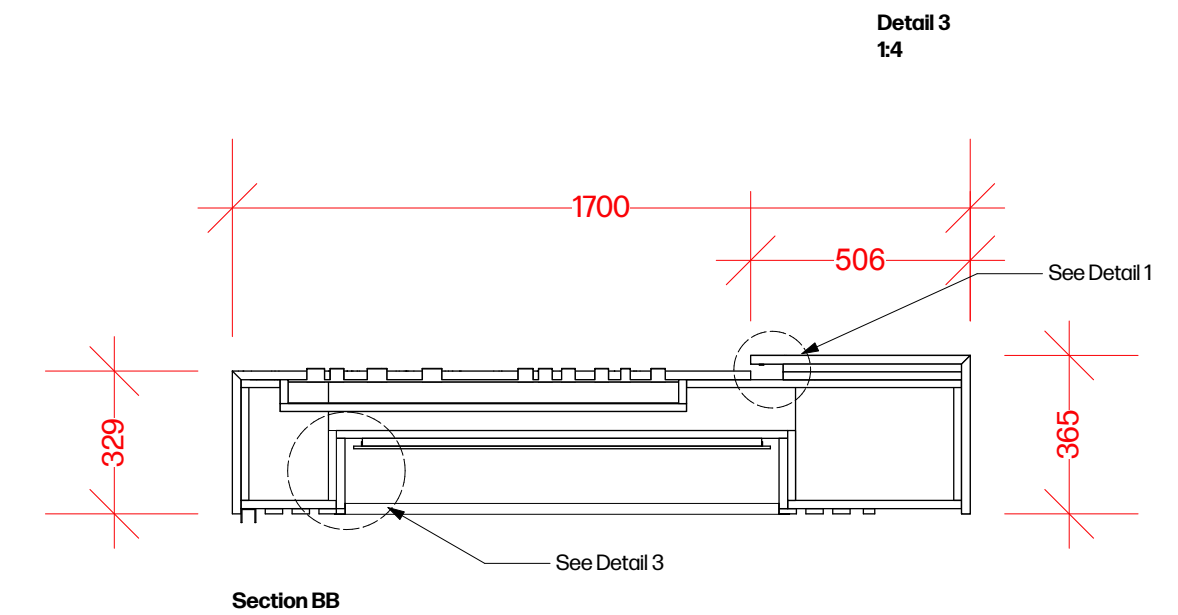
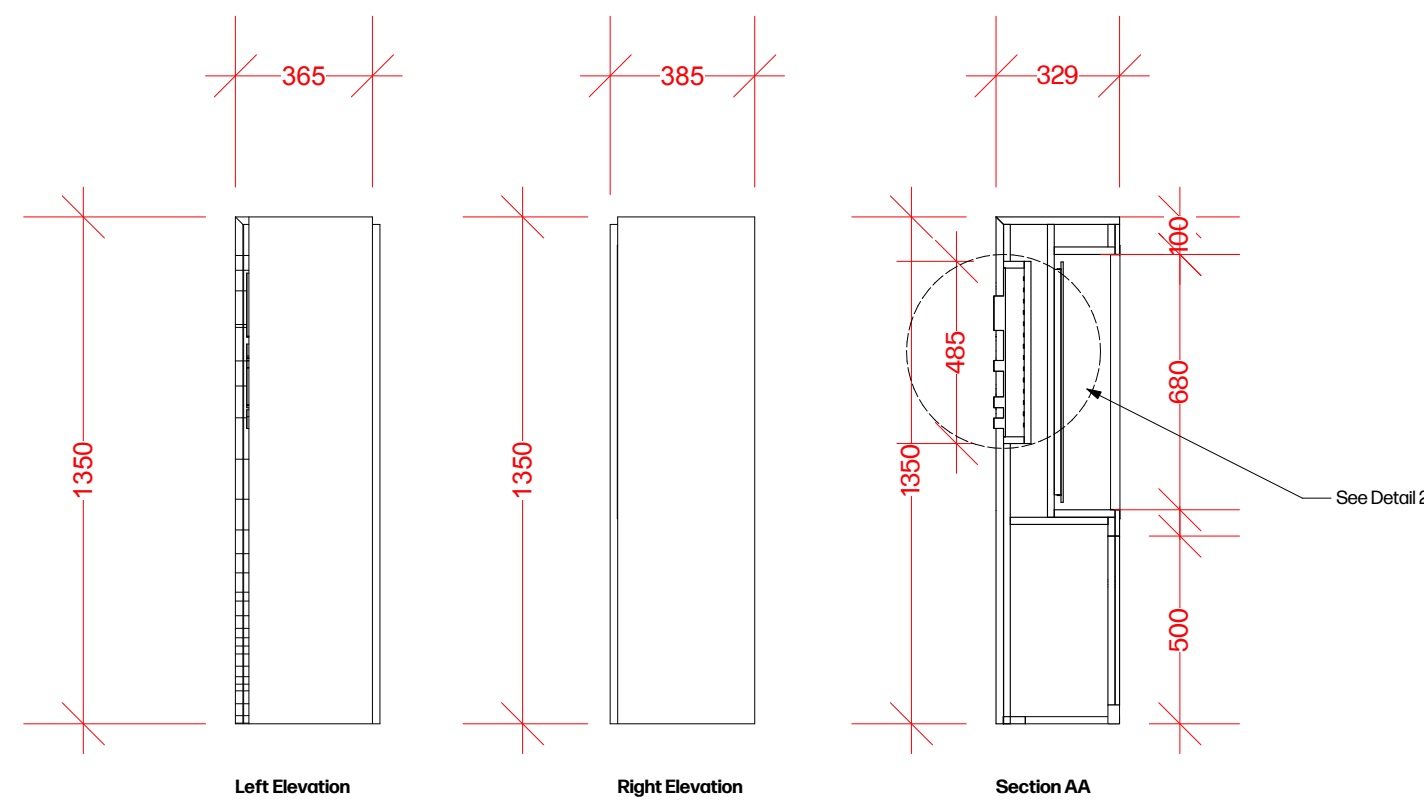
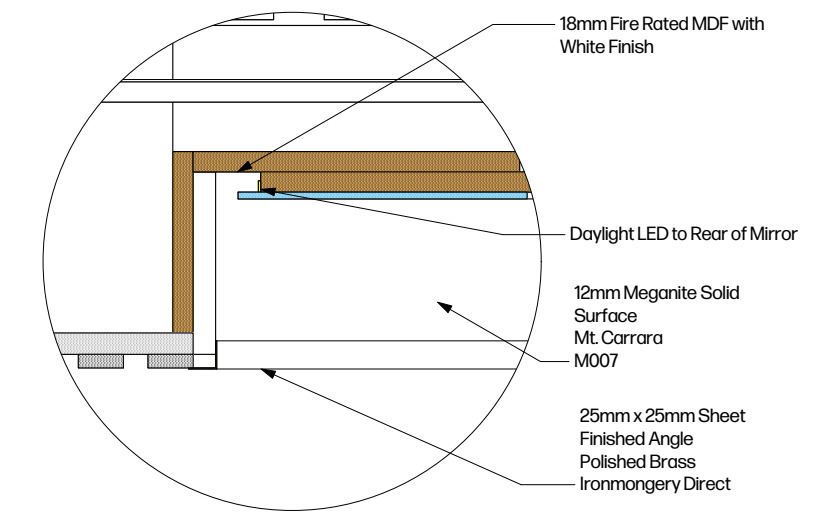
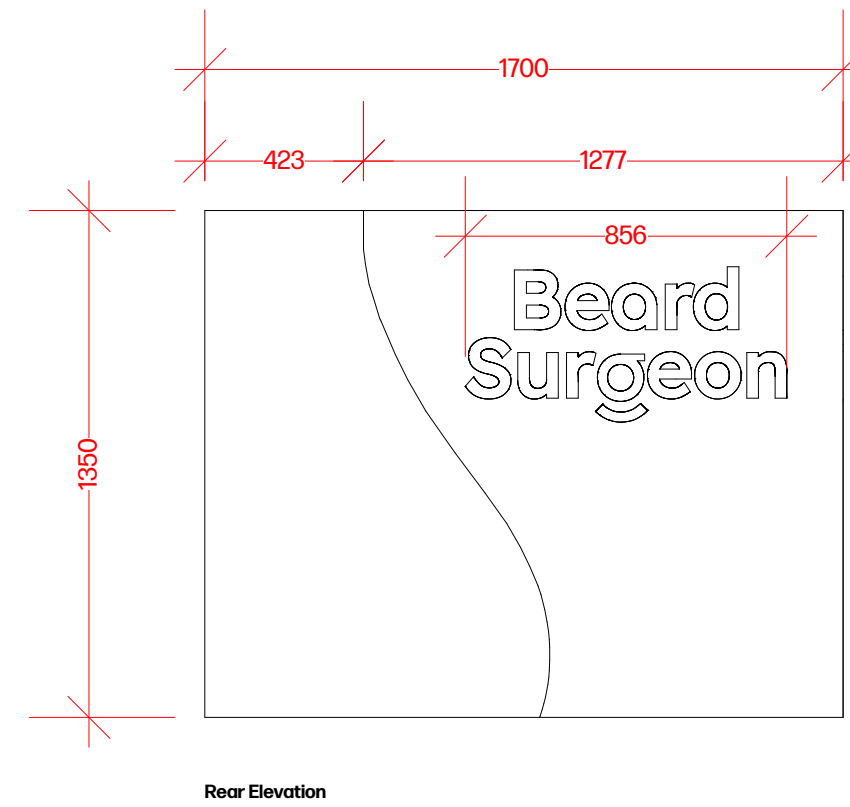
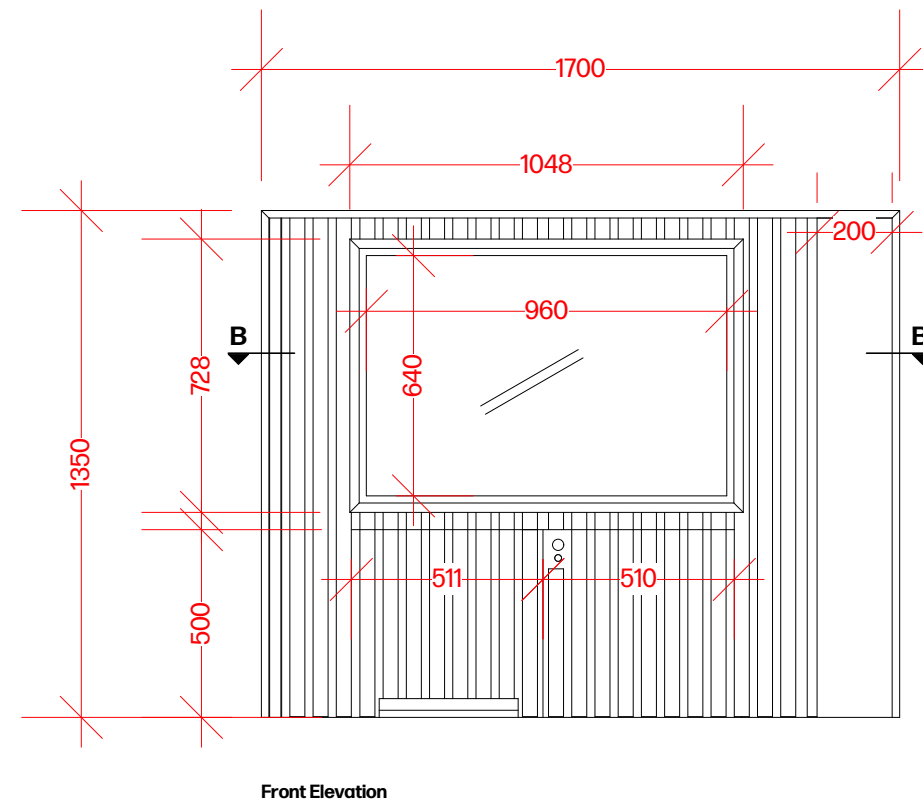
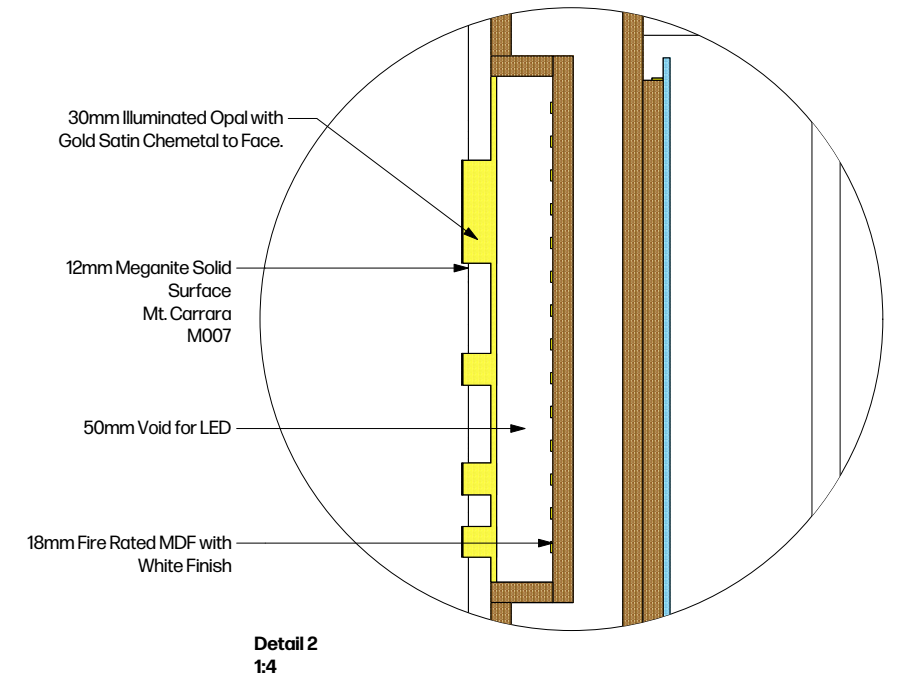
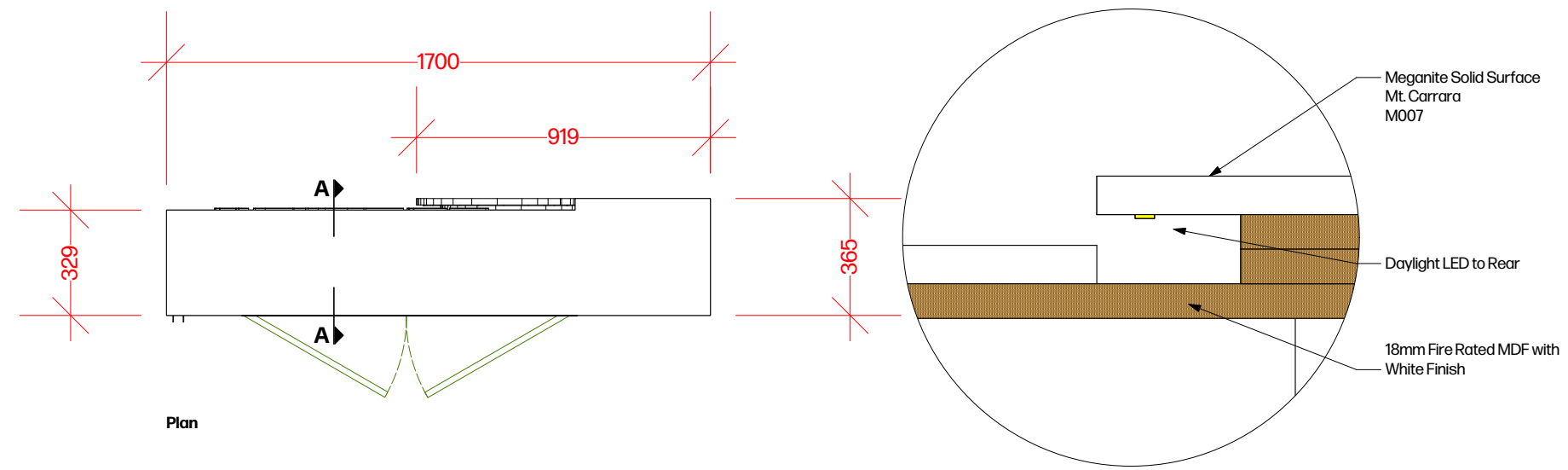
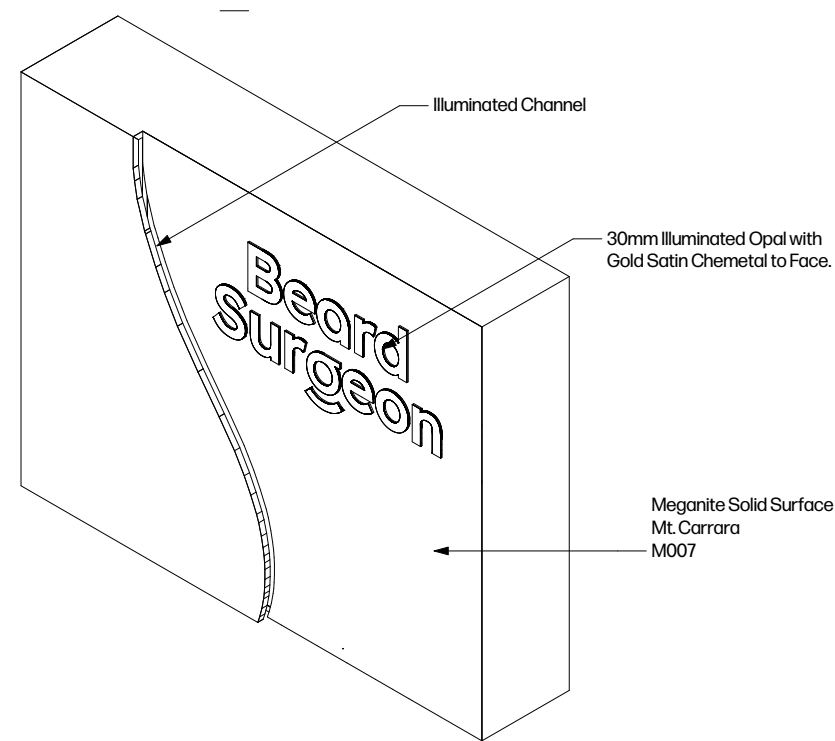
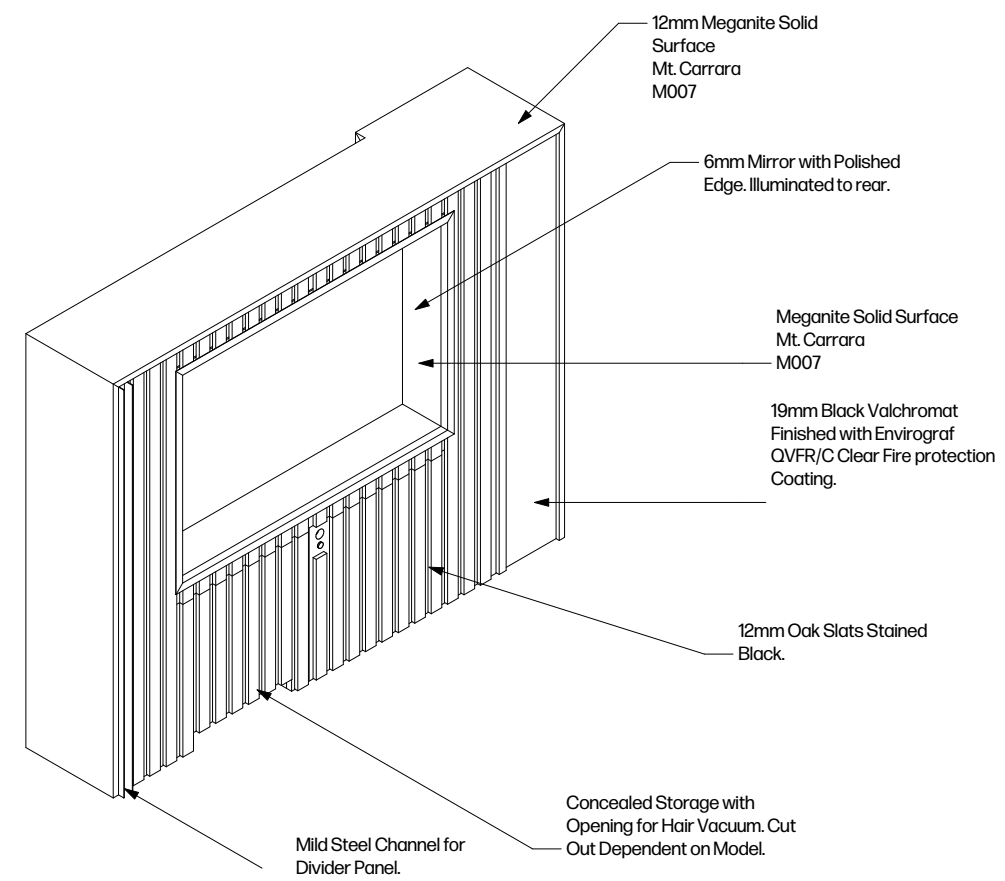


360° Client Engagement: Designed with a 360° approach, the kiosk maximises interaction with potential clients from all angles. This strategic design increases visibility and accessibility, creating an inviting and engaging shopping experience.



**Beard
Surgeon**

TECHNICAL DRAWINGS



Beard Surgeon

TEMPORARY KIOSK

FRESKO

For Fresko, we seamlessly integrated their brand elements into the kiosk design, creating a small but impactful space that stands out. Here's how we did it:

White Solid Surface Countertops: These not only provide a sleek and modern look but also ensure durability and easy maintenance.

Bright Blue Fire-Rated MDF Panelling: This eye-catching colour choice aligns with Fresko's brand identity while meeting safety standards.



Engaging Graphics: Simple yet effective, the graphics add a touch of personality and draw customers in.

The result is a kiosk that truly pops into its environment, attracting attention and enhancing the overall customer experience.



TEMPORARY KIOSK

DUCK WORLD

Duckworld came to us with a vibrant concept that required a **dynamic, engaging retail space**. Our mission was to translate this vision into a tangible, functional space that not only attracted customers but also enhanced the Duckworld brand experience.

Bespoke Cabinets: Custom-designed bright yellow cabinets that reflect Duckworld's playful and energetic brand. These cabinets were tailored to maximise both aesthetic appeal and practical functionality.

Precision Craftsmanship: Each piece of the kiosk was fabricated with precision, ensuring the highest quality and durability.



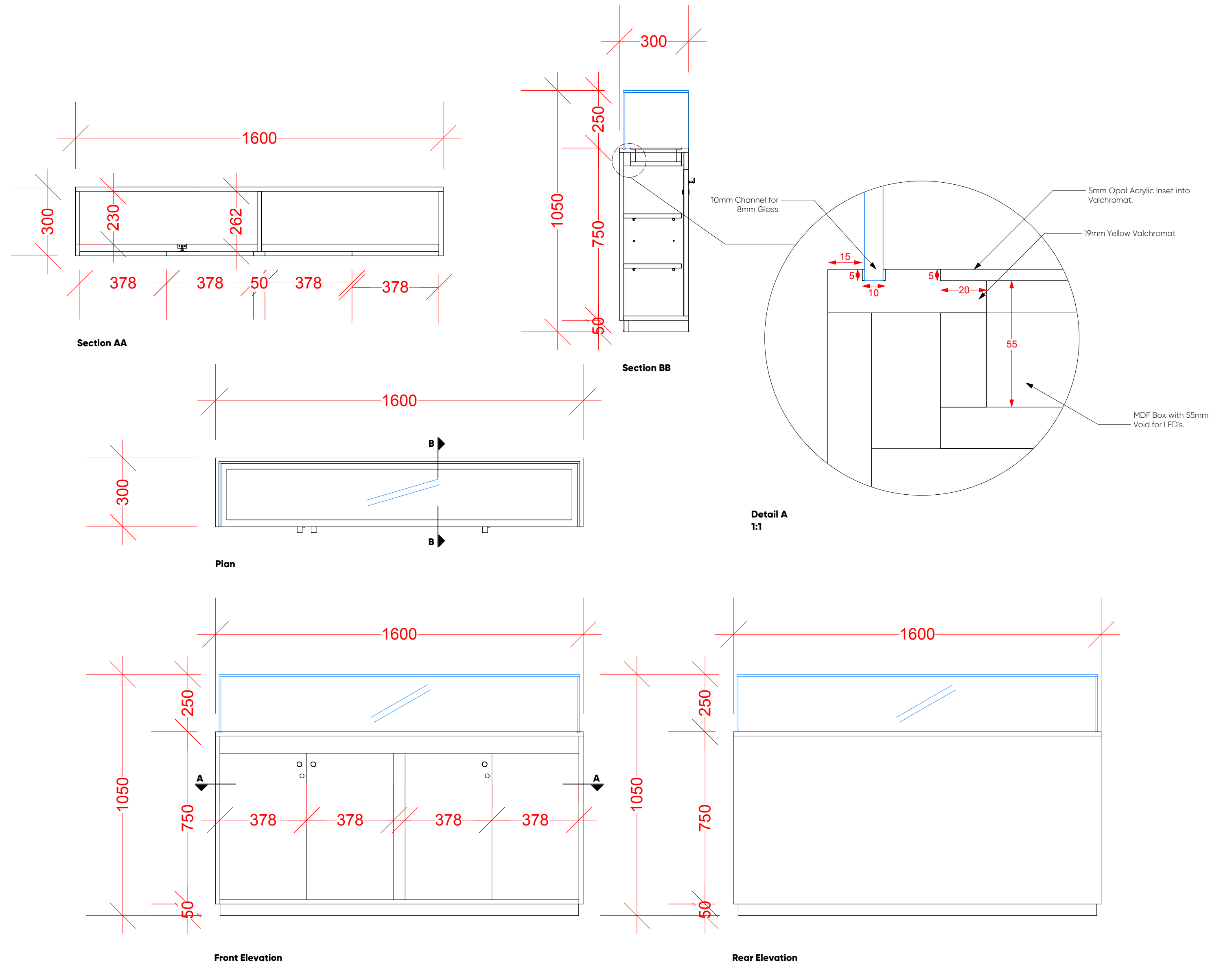
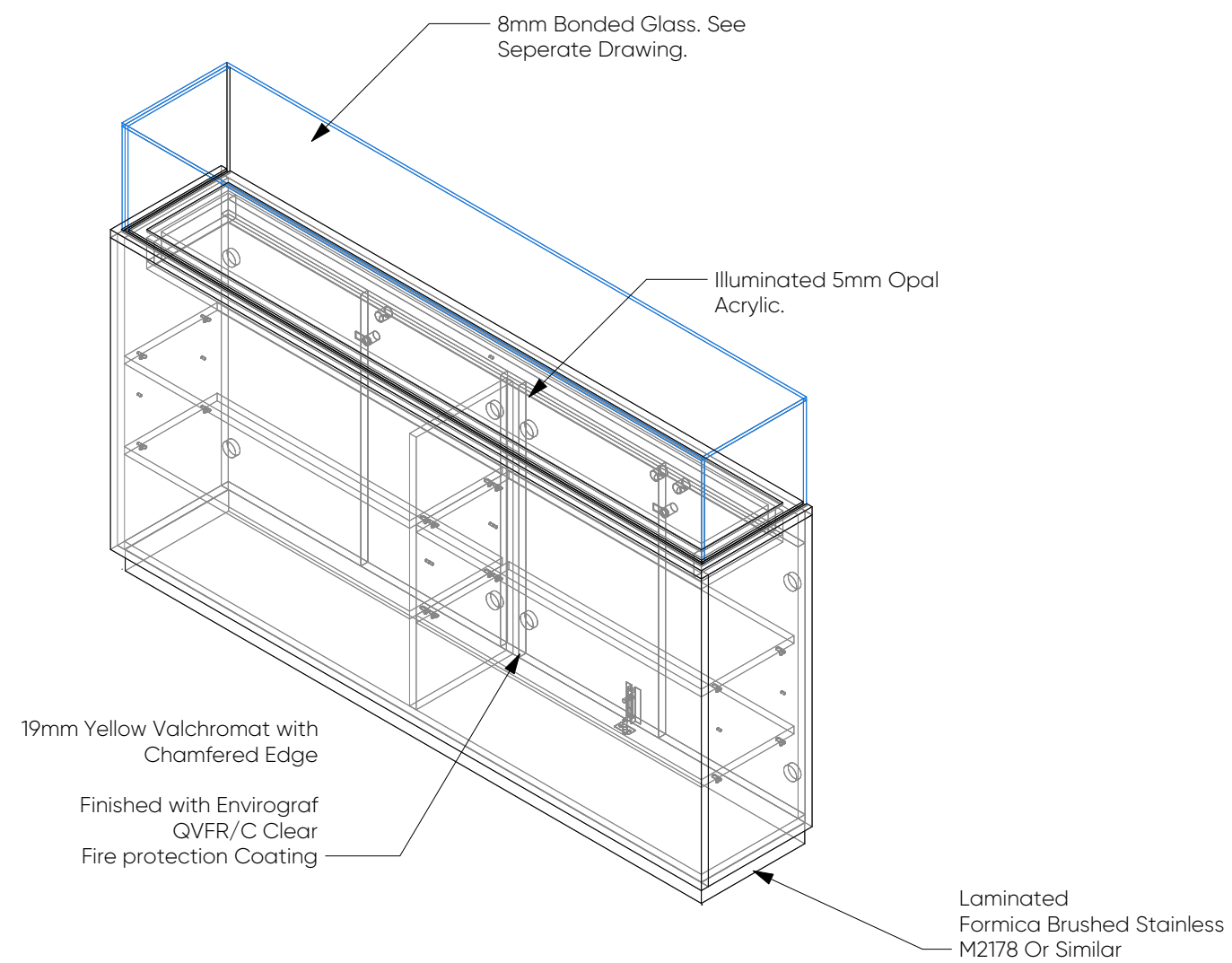
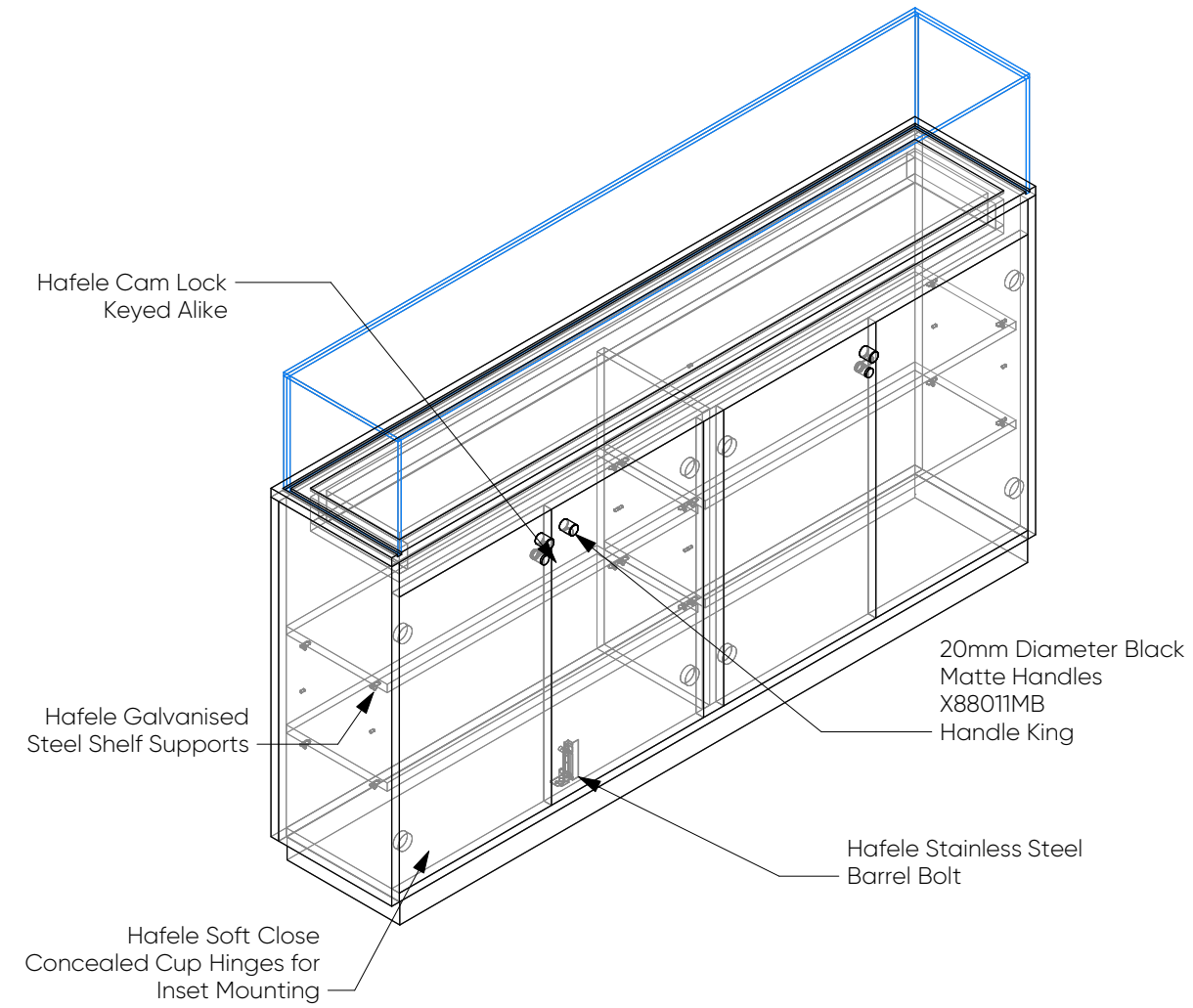
Seamless Integration: We managed the entire installation process, ensuring that every element was seamlessly integrated to create a cohesive and visually stunning final product.

Custom LED Signage: Innovative LED signage that provided a modern and dynamic touch, catching the eye of passersby and drawing them into the kiosk.





TECHNICAL DRAWINGS



TEMPORARY KIOSK

MYOMASTER

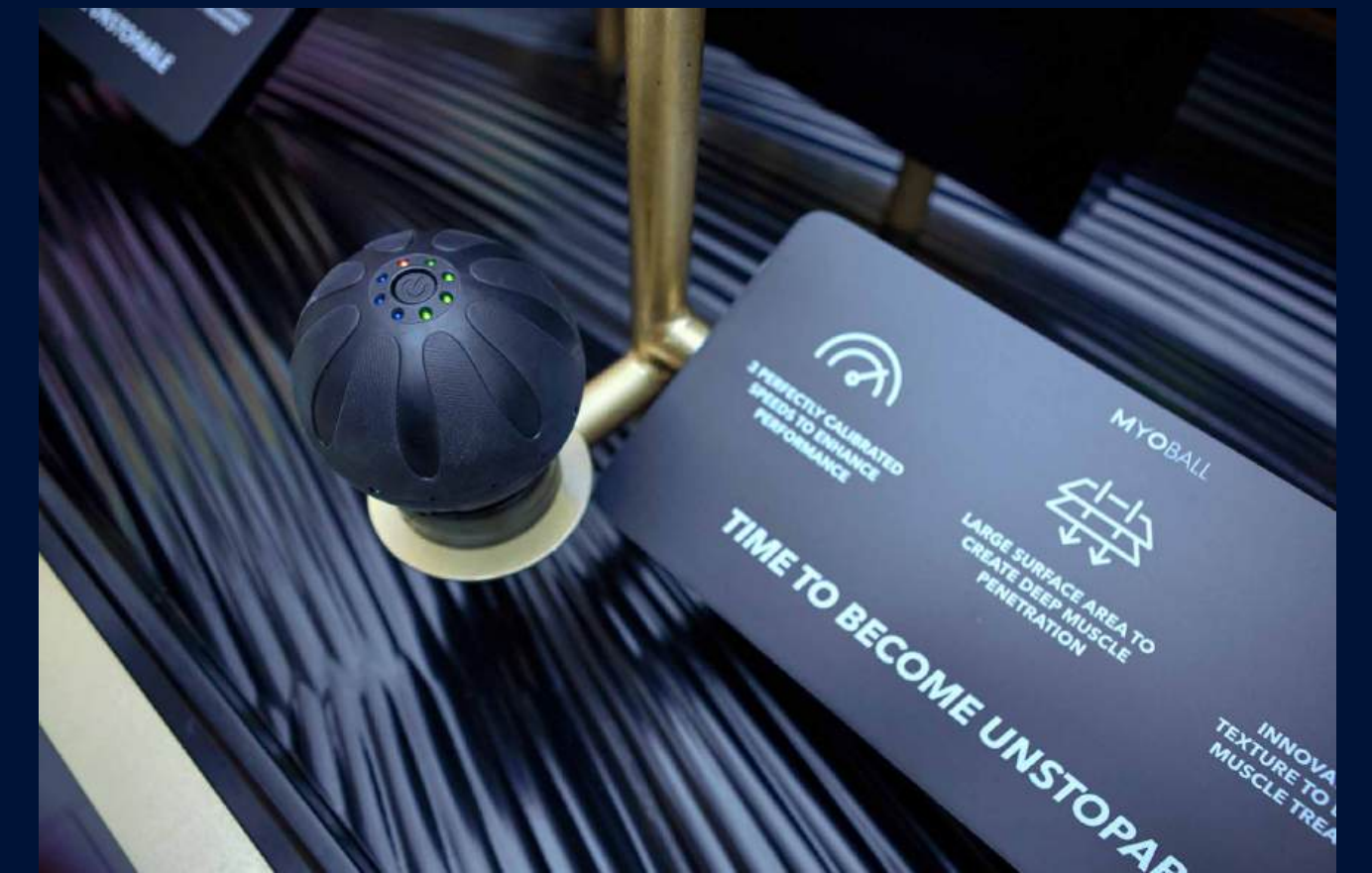
When fitness brand Myomaster approached us, they sought a kiosk that not only showcased their premium offerings but also made a lasting impression on customers. Our team rose to the challenge, conceptualising and bringing to life a masterpiece that exceeded all expectations.

The Myomaster kiosk stands as a testament to our unwavering commitment to detail and excellence. From initial concept sketches to 3D mock-ups and finally, the finished installation, every step of the process is carefully curated by our award-winning team.

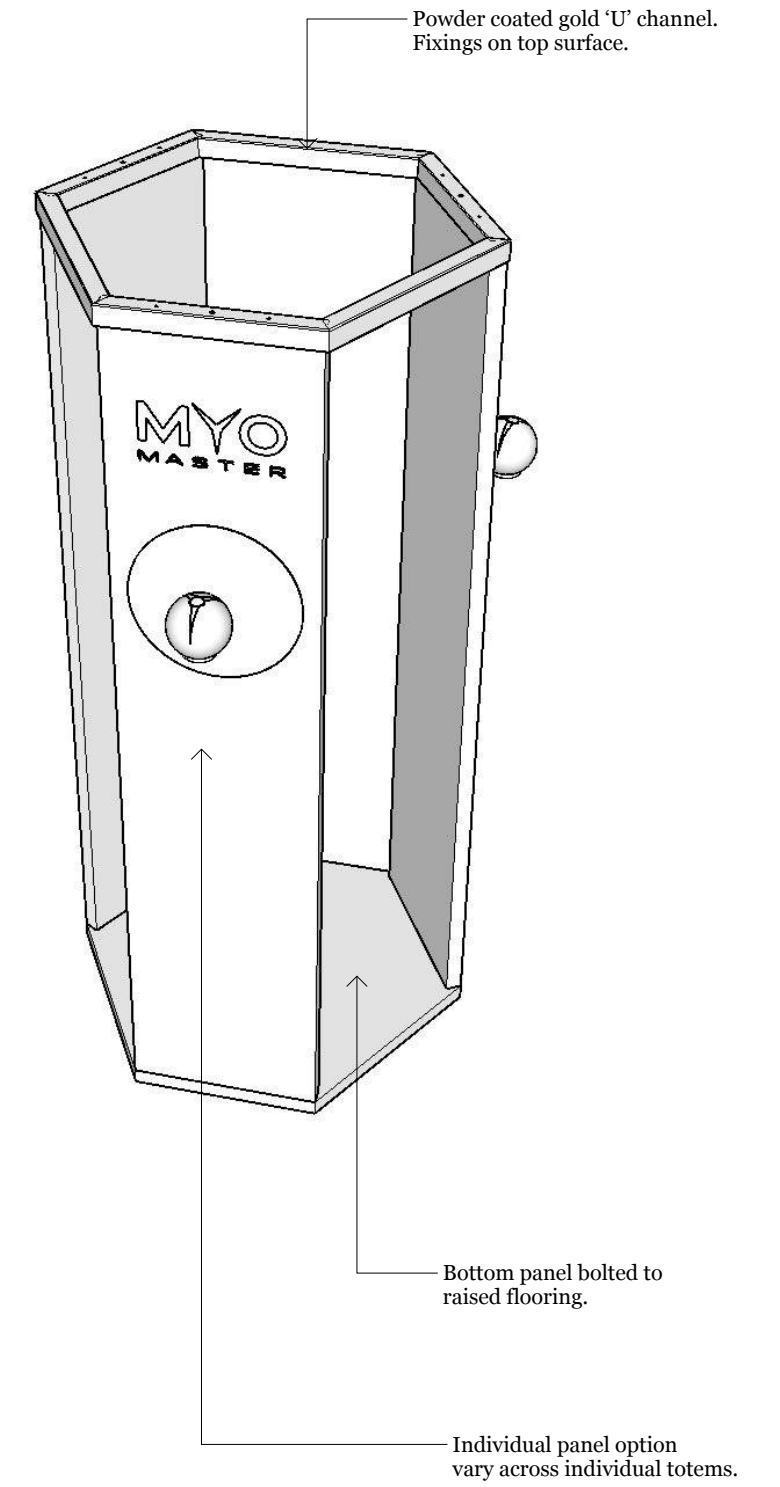
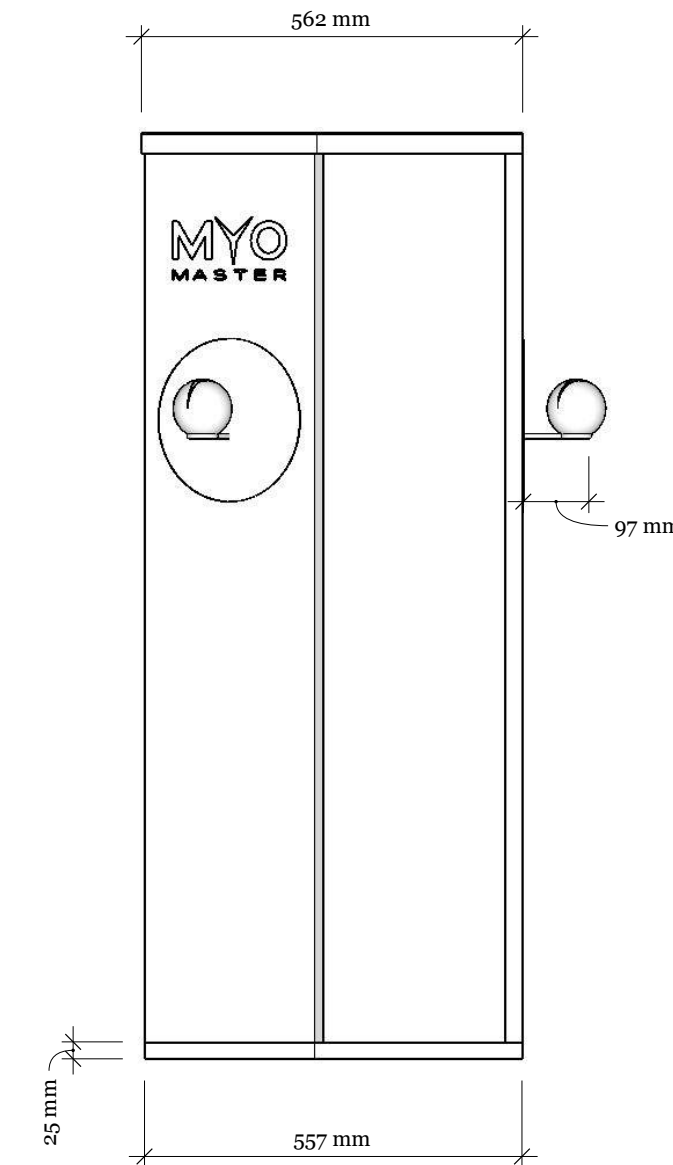
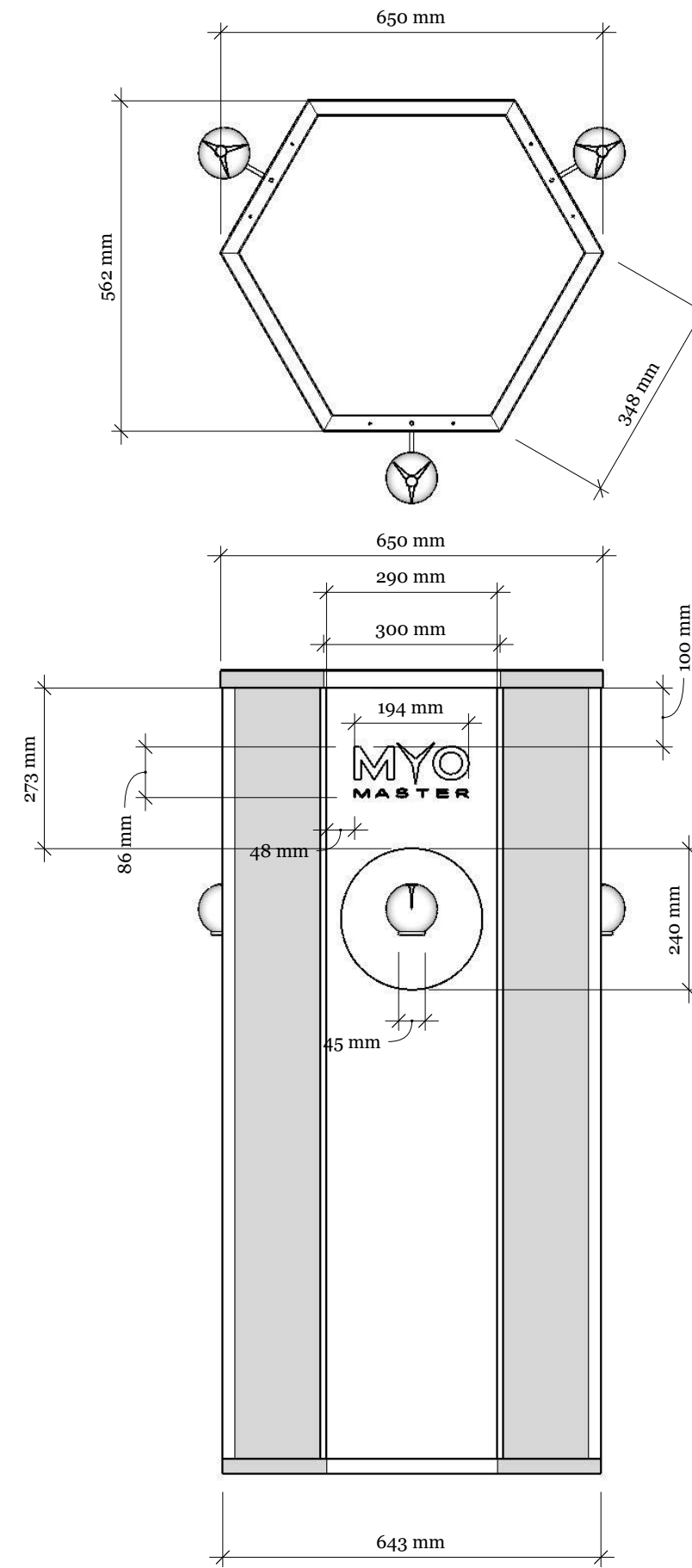
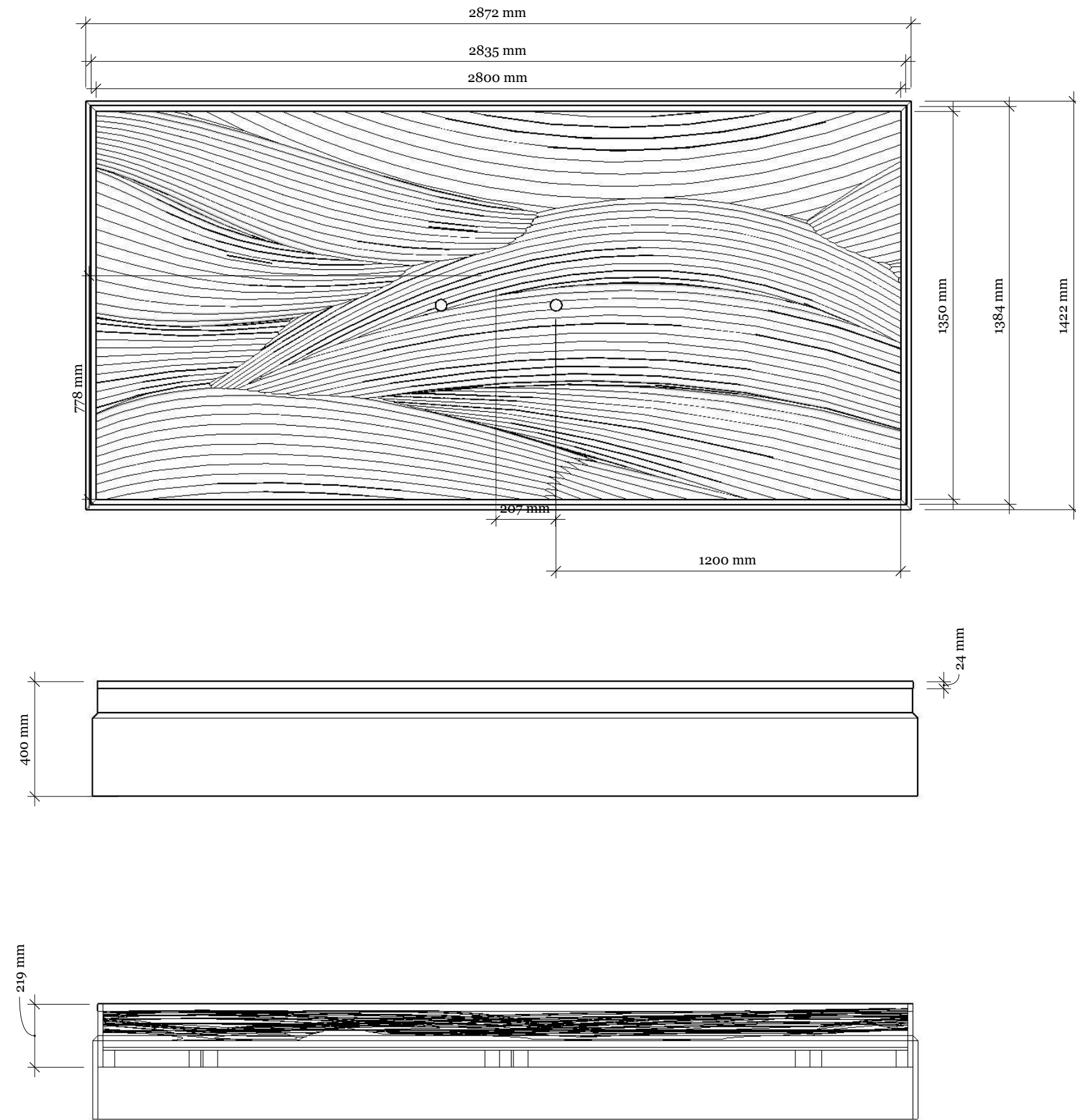


At the heart of the Myomaster kiosk lies a stunning 360-degree structure, meticulously crafted to draw attention and inspire awe.

Anchoring the space is a magnificent 5-axis CNC'd muscleform-like display table, meticulously engineered to showcase Myomaster's products in all their glory. This centerpiece not only serves as a functional display but also as a work of art, seamlessly blending form and function.



TECHNICAL DRAWINGS



PERMENANT KIOSK

THE PROCESS

We will manage every aspect of the entire project so that you can focus on the opening of your brand new kiosk!

DON'T HAVE BRANDING?

No problem. We offer branding services!

PHASE 1

1

INITIAL MEETING

Let's chat and craft a brief tailored to your wants and needs. We can arrange a meeting at our office or set up a video call. Whichever option suits you best!

2

BRAND HANDOVER

Share your resources with us, and we will create a moodboard filled with inspiration that aligns with your brand's aesthetic.

3

DESIGN

Working alongside you, we can create a concept that works within your budget and your brand's style guide.

4

INITIAL CONCEPT

Once we have crafted an initial design concept, we will share a proposal containing an RD1 of your kiosk for your input.

5

REVISION

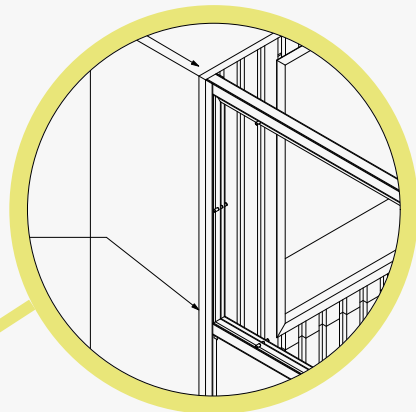
Following your feedback, we will make necessary adjustments to the design to align it more closely with your vision. Once the changes are approved, we will start the next phase of the project.

PHASE 2

6

TECHNICAL DRAWINGS

Our design team will then put together detailed technical drawings (RD2) of the kiosk. Our construction team will later use as a guide during the building process.



7

LANDLORD APPROVAL

We then submit an RD2 to the shopping center for approval and make any adjustments required for sign off. Rest assured, we will handle this process on your behalf!

8

SAMPLE PACK APPROVAL

A permanent kiosk also requires approval of materials used in construction. We will put together a sample package and send directly to the shopping center for feedback.

9

PRODUCTION

Our team will source and order materials, construct and implement specialized components, and transform the project from concept to reality.

10

BUILD & INSTALL

Before install, we carry out quality control checks and manage the logistics. On the day of installation, our install team carefully pack, wrap, and transport the components from our warehouse and assemble the kiosk on-site.

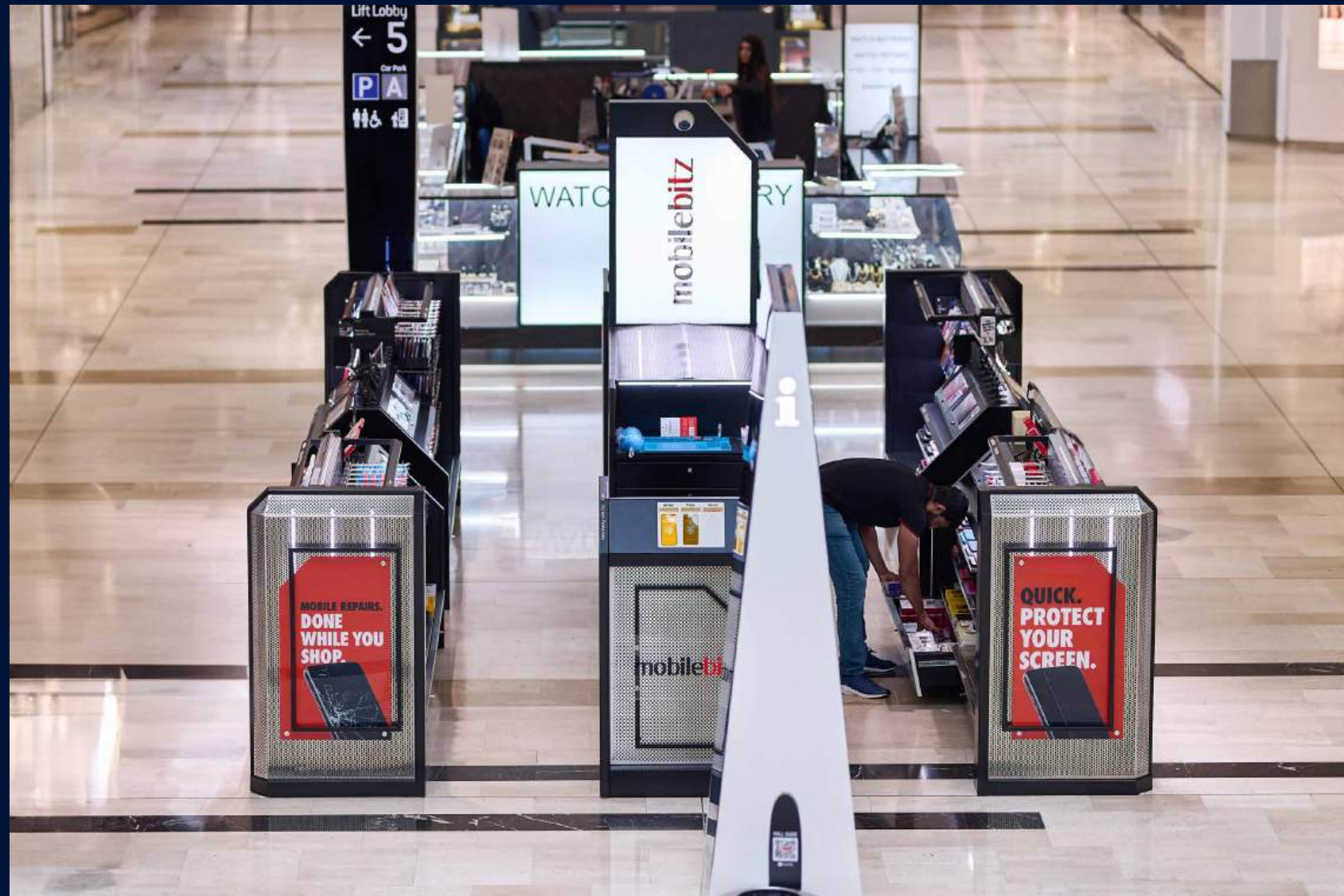
OVER 12 MONTH INSTALLATION PERIOD

PERMANENT KIOSK

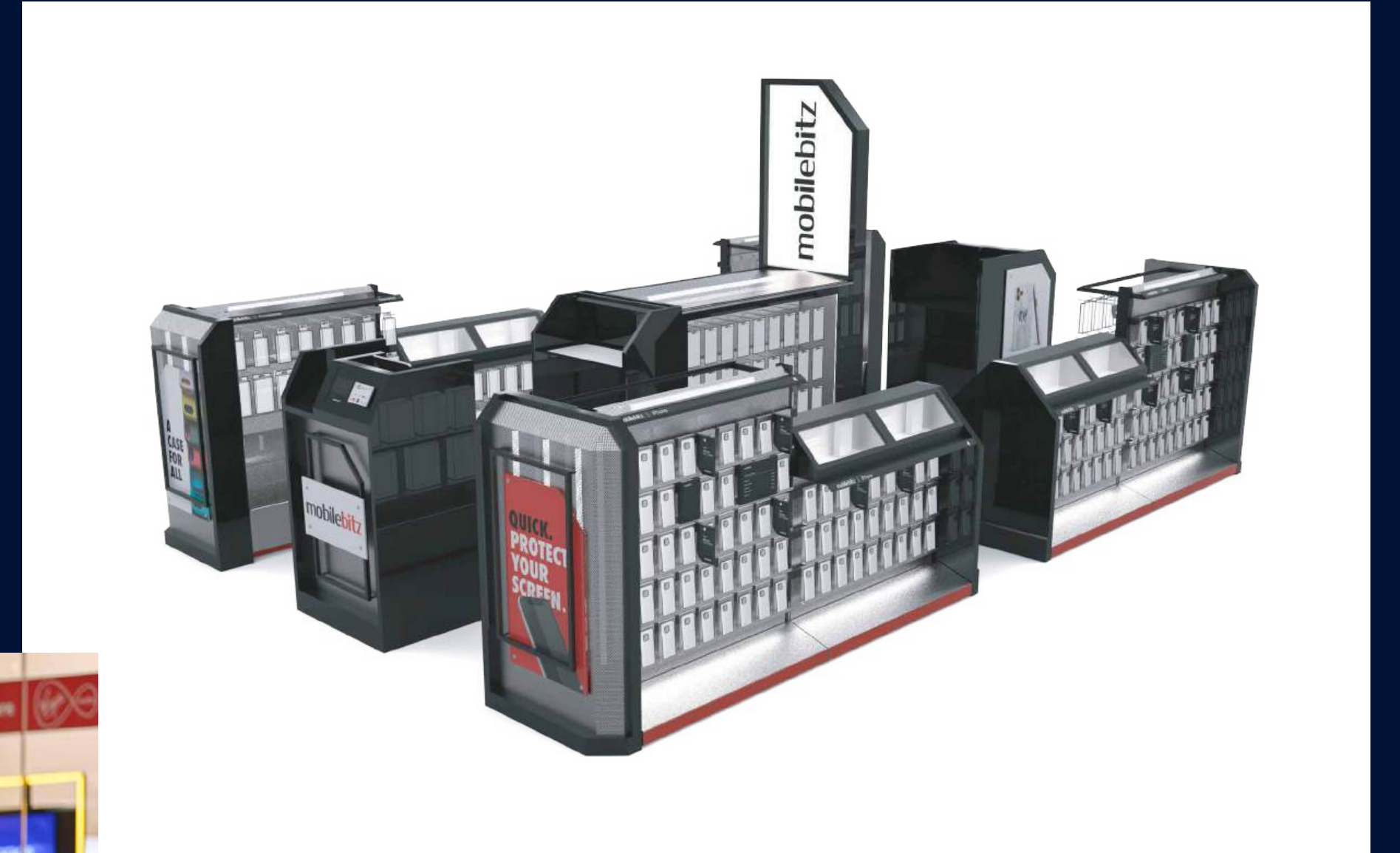
MOBILEBITZ

The Mobile Bitz kiosk is a marvel of engineering, boasting **926 custom parts**—all uniquely designed and fabricated to meet the specific needs of our client. In this project, nothing was off the shelf; every component was meticulously crafted to ensure a perfect fit and finish.

We ingeniously constructed the Mobile Bitz logo from recycled phone parts. This not only underscores our commitment to sustainability but also adds a unique and engaging visual element to the design.

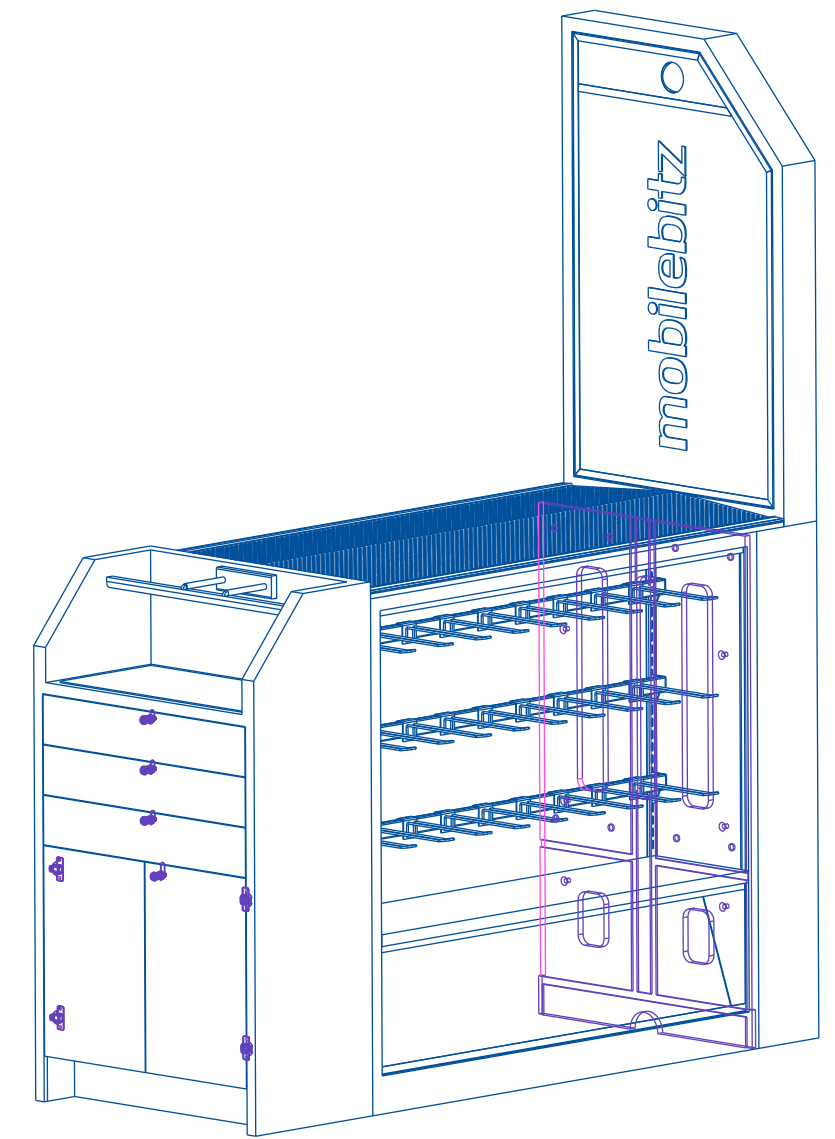
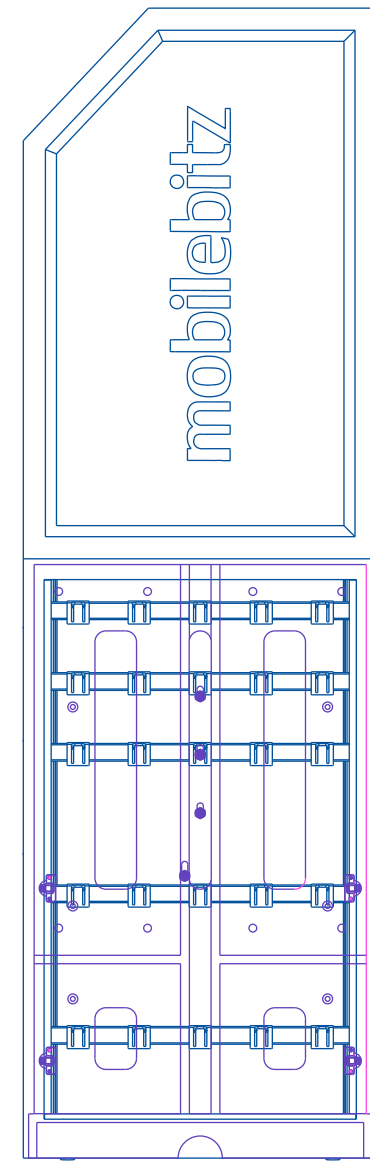
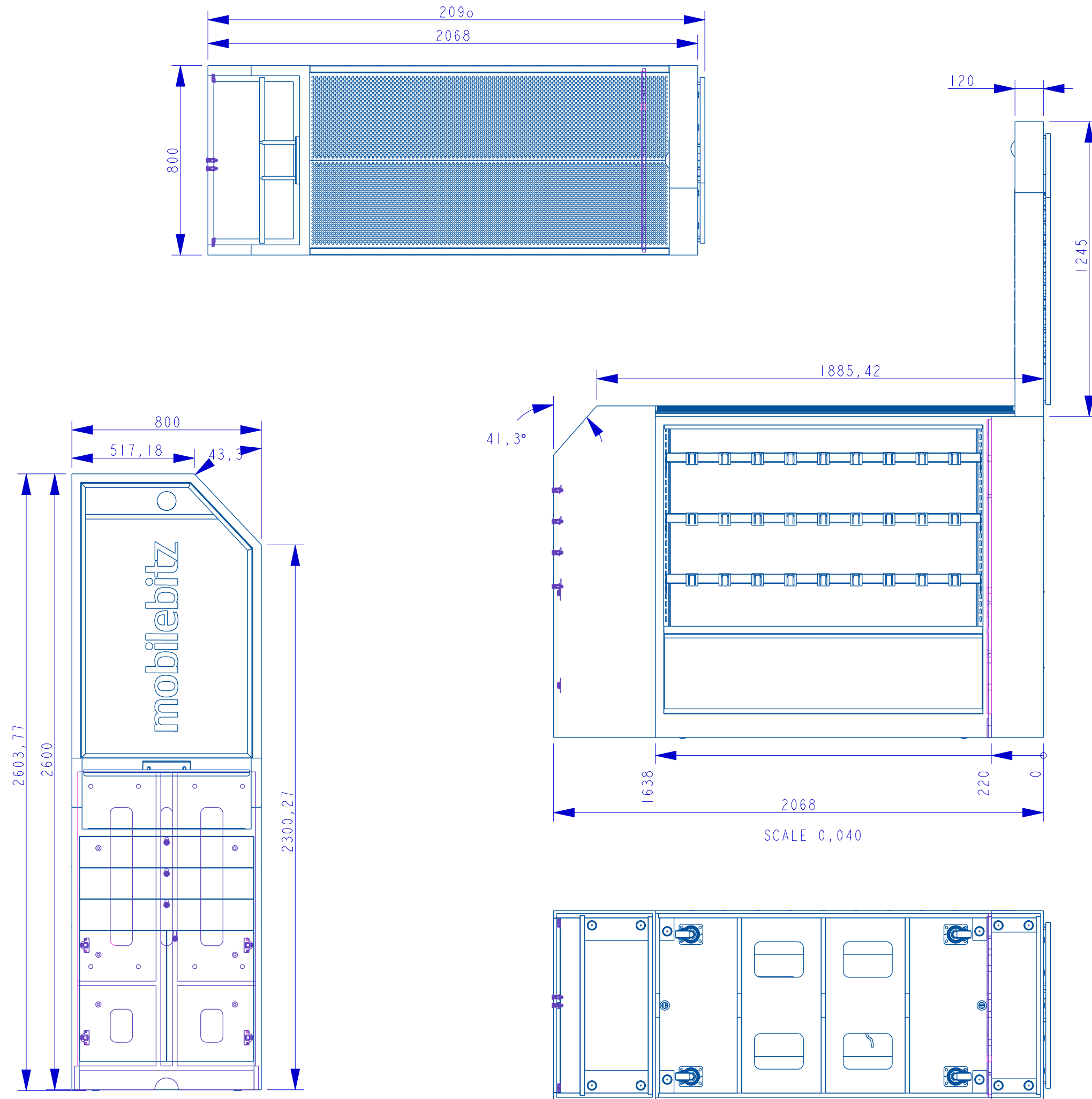


Our use of blackened steel and stainless steel creates a stunning contrast and lends the kiosk a bold, industrial aesthetic. This choice of materials was deliberate, aimed at making a lasting impact and drawing attention to the kiosk in any retail environment.

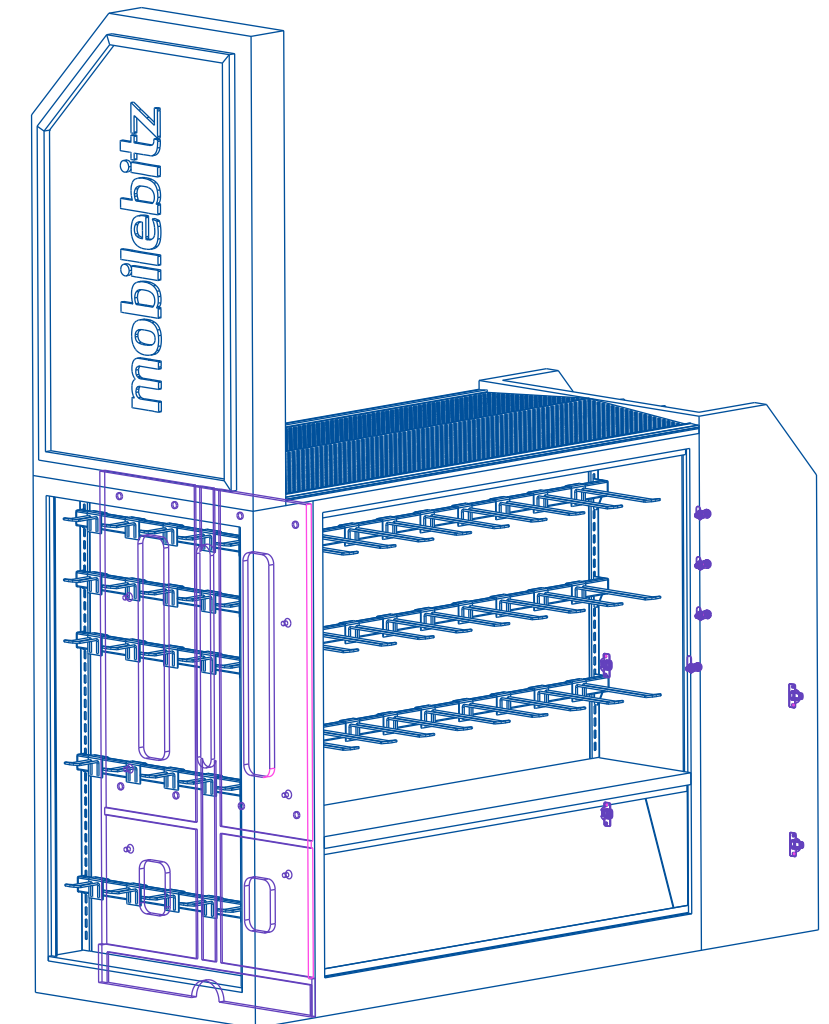


mobilebitz

TECHNICAL DRAWINGS



SCALE 0,035



SCALE 0,035

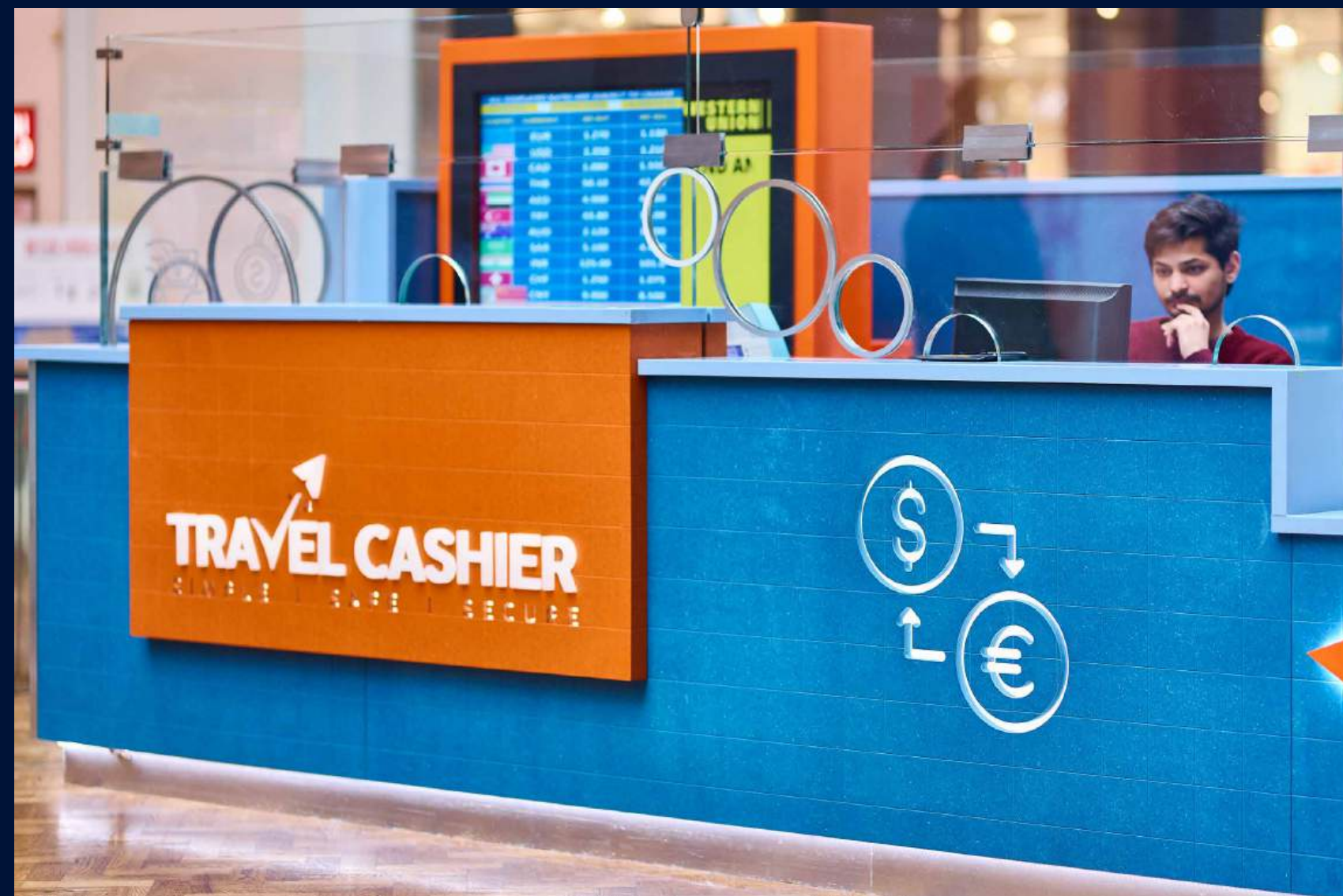
PERMANENT KIOSK

TRAVEL CASHIER

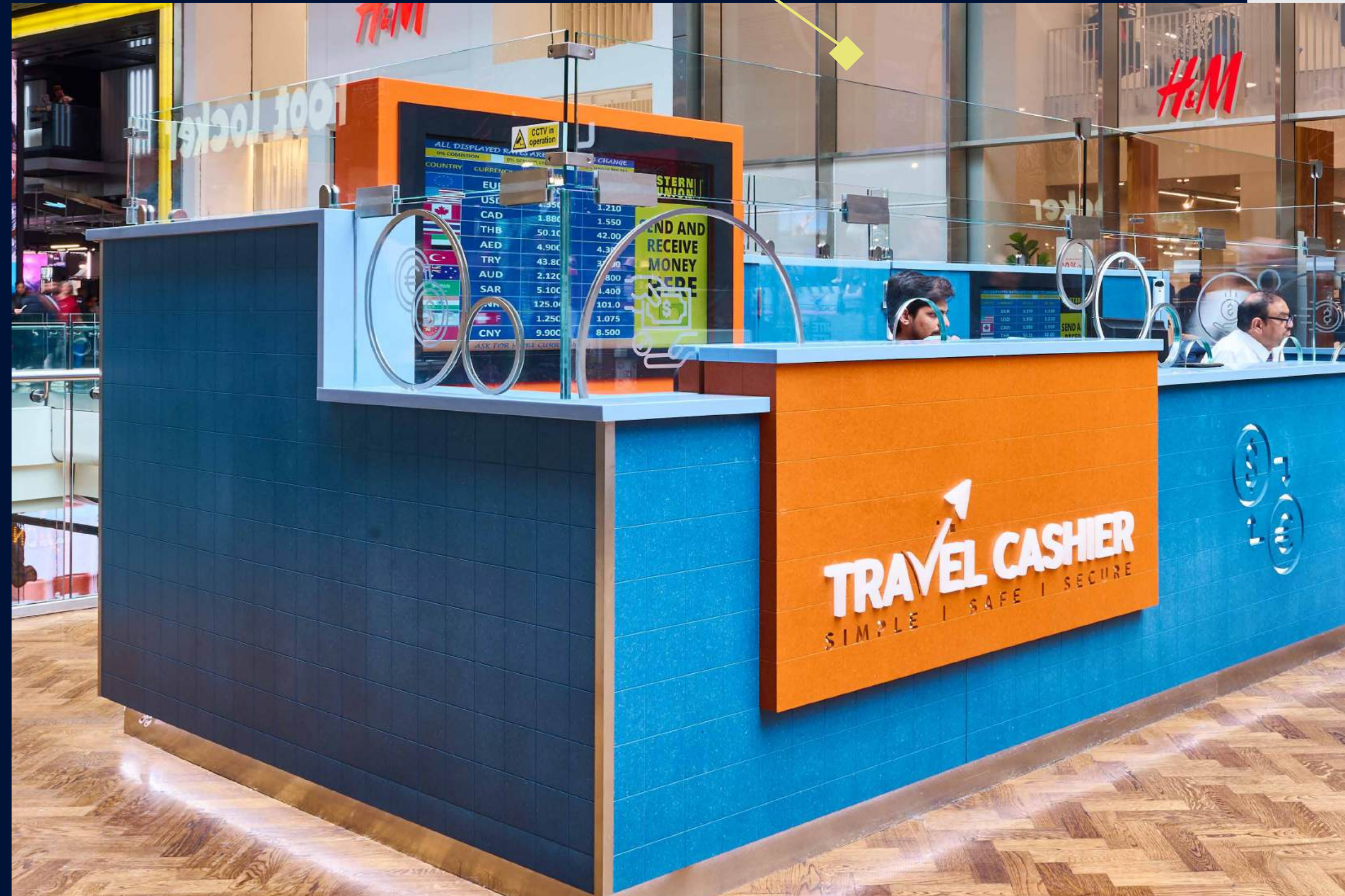
For Travel Cashier, we created a kiosk that not only stands out visually but also meets high security standards. Here's a closer look at what makes this project special:

Standout Design: The kiosk features a unique design using Valchromat, a high-density, coloured wood fibre board. We CNC'd this material into a bespoke pattern, creating a visually striking surface.

Premium Materials: We incorporated Hi Macs Solid Surface. This material adds a sleek, modern look and is known for its durability and ease of maintenance, making it ideal for high-traffic retail environments.



Enhanced Security: Security was a top priority for Travel Cashier. We installed bank-grade glass, providing the highest level of protection without compromising on style. This glass is tough, resilient, and ensures the safety of both employees and customers.





RETAIL KIOSKS BY OLLYWOOD™

OLLYWOOD™

**We look forward to
working with you!**

FIND US ON SOCIALS

